

For Windows XP Users

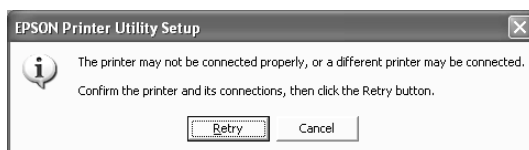
To use your EPSON printer with Windows XP, follow the instructions in this guide.

Installing the Printer Driver

The steps to install the printer driver for Windows XP are the same as those for Windows 2000. Simply follow the instructions for Windows 2000 in your documentation.

Note:

- ❑ *In addition to the EPSON printer driver, the Microsoft printer driver may also be installed. EPSON recommends using the EPSON printer driver.*
- ❑ *If you are using a parallel cable, click Cancel when the following screen is displayed, then follow the on-screen instructions.*



Accessing the Printer Software

From the Start menu

Follow the steps below to access the printer software.

1. Click Start, Control Panel, Printers and Other Hardware, then Printers and Faxes.
2. Select your printer, and then click Printing Preferences on the File menu.

The printer software opens.

From the task bar

Accessing the printer software from the task bar is not available for Windows XP.

Uninstalling the printer driver

Note:

To uninstall software programs in Windows XP, it is necessary to log on with a Computer Administrator account. You cannot uninstall software programs if you log on as a Limited account user.

1. Turn off the printer and disconnect the cable from the printer.
2. Click Start, then Control Panel.
3. Click Add/Remove Programs and select EPSON Printer Software from the list. Then, click Change/Remove.
4. Select the EPSON Stylus Photo 1290 Series icon and click OK.
5. Click OK.

System Requirements

Your computer should also meet the following system requirements.

Minimum System Requirements	Recommended System
Pentium 233 MHz processor	300 MHz or higher processor
64 MB RAM	128 MB or more
50 MB hard disk space	100 MB hard disk space or more
SVGA monitor	SVGA or better monitor